

## GN 431 | Wing knobs

Stainless steel

METRIC

INOX  
STAINLESS  
STEEL

RoHS

### MATERIAL

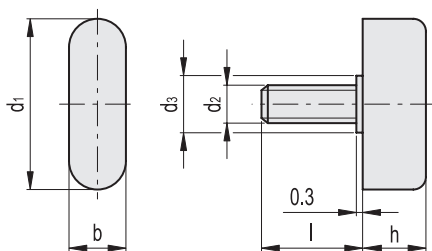
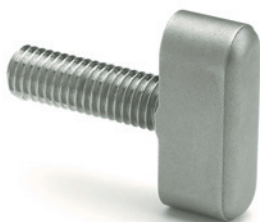
AISI 316L sintered stainless steel, sandblasted matte finish.

### STANDARD EXECUTION

AISI 304 stainless steel threaded pin, screwed and set in the body with a lock pin.

### FEATURES AND APPLICATIONS

These wing knobs allow high tightening torque values.



## GN 432 | Wing knobs

Stainless steel

METRIC

INOX  
STAINLESS  
STEEL

RoHS

### MATERIAL

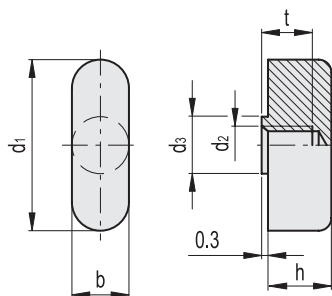
AISI 316L sintered stainless steel, sandblasted matte finish.

### STANDARD EXECUTION

Threaded blind hole.

### FEATURES AND APPLICATIONS

These wing knobs allow high tightening torque values.



INOX STAINLESS STEEL METRIC

Code	Description	d1	d2	d3	b	h	l	⚖
GN.29371	GN 431-25-M6-16	25	M6	8	8	10	16	15
GN.29375	GN 431-25-M6-20	25	M6	8	8	10	20	16
GN.29381	GN 431-25-M6-25	25	M6	8	8	10	25	17
GN.29401	GN 431-30-M8-16	30	M8	10	10	12	16	26
GN.29405	GN 431-30-M8-20	30	M8	10	10	12	20	28
GN.29411	GN 431-30-M8-25	30	M8	10	10	12	25	30
GN.29415	GN 431-30-M8-32	30	M8	10	10	12	32	32
GN.29422	GN 431-36-M10-20	36	M10	12	12	14.5	20	48
GN.29424	GN 431-36-M10-30	36	M10	12	12	14.5	30	53
GN.29426	GN 431-36-M10-40	36	M10	12	12	14.5	40	55

INOX STAINLESS STEEL METRIC

Code	Description	d1	d2	d3	b	h	t <sub>min</sub>	⚖
GN.29431	GN 432-25-M6	25	M6	8	8	10	7	11
GN.29441	GN 432-30-M8	30	M8	10	10	12	9	19
GN.29451	GN 432-36-M8	36	M8	12	12	14.5	10	35

#### Conversion Table

1 mm = 0.039 inch

d1	
mm	inch
25	0.95
30	1.18
36	1.42